



**TextileExchange**  
Creating Material Change

# Leather Learning Series: Part Two

## *Leather's Connection to the Farm*

---

Tuesday, June 23<sup>rd</sup>, 2020



## Speakers

---

Anne Gillespie, Director of Impact Acceleration, *Textile Exchange*

Pablo Borrelli, Co-founder of *Ovis 21*, EOV Program Manager at *Savory Institute*

Charton Jahn Locks, Associate Founder and CEO, *Aliança da Terra*

Mariano Salerno, Director, Sustainable Products Development, *ACDI*

Kaley Segboer, Certification Framework Manager, *CRSB*

## Leather Impact Accelerator (LIA)

DCF Protocol

Animal  
Welfare  
Benchmark

Leather  
Production  
Benchmarks

Impact  
Incentives

Claims  
Framework

Traceability  
Guidelines

The primary goal of the Leather Impact Accelerator is to **accelerate positive impacts** in the leather industry through **widescale adoption** of minimum level of best practices.



# Regenerative Livestock Farming

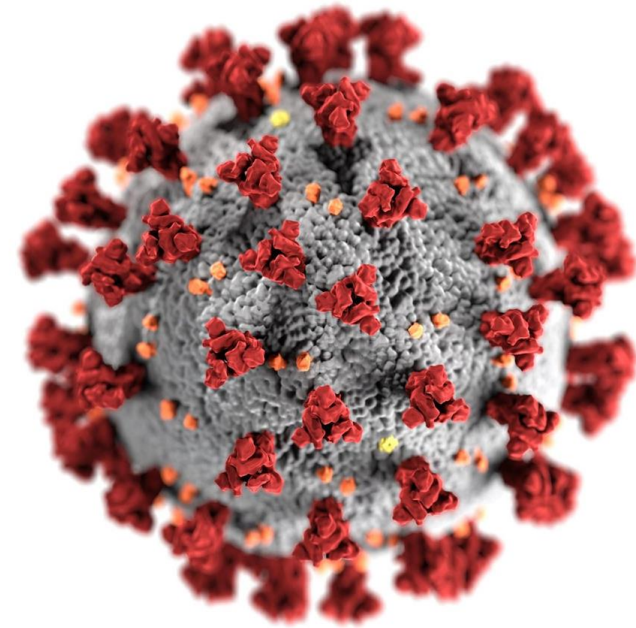
Pablo Borrelli, Co-founder of Ovis 21, EOV Program Manager at Savory Institute  
[pborrelli@ovis21.com](mailto:pborrelli@ovis21.com)



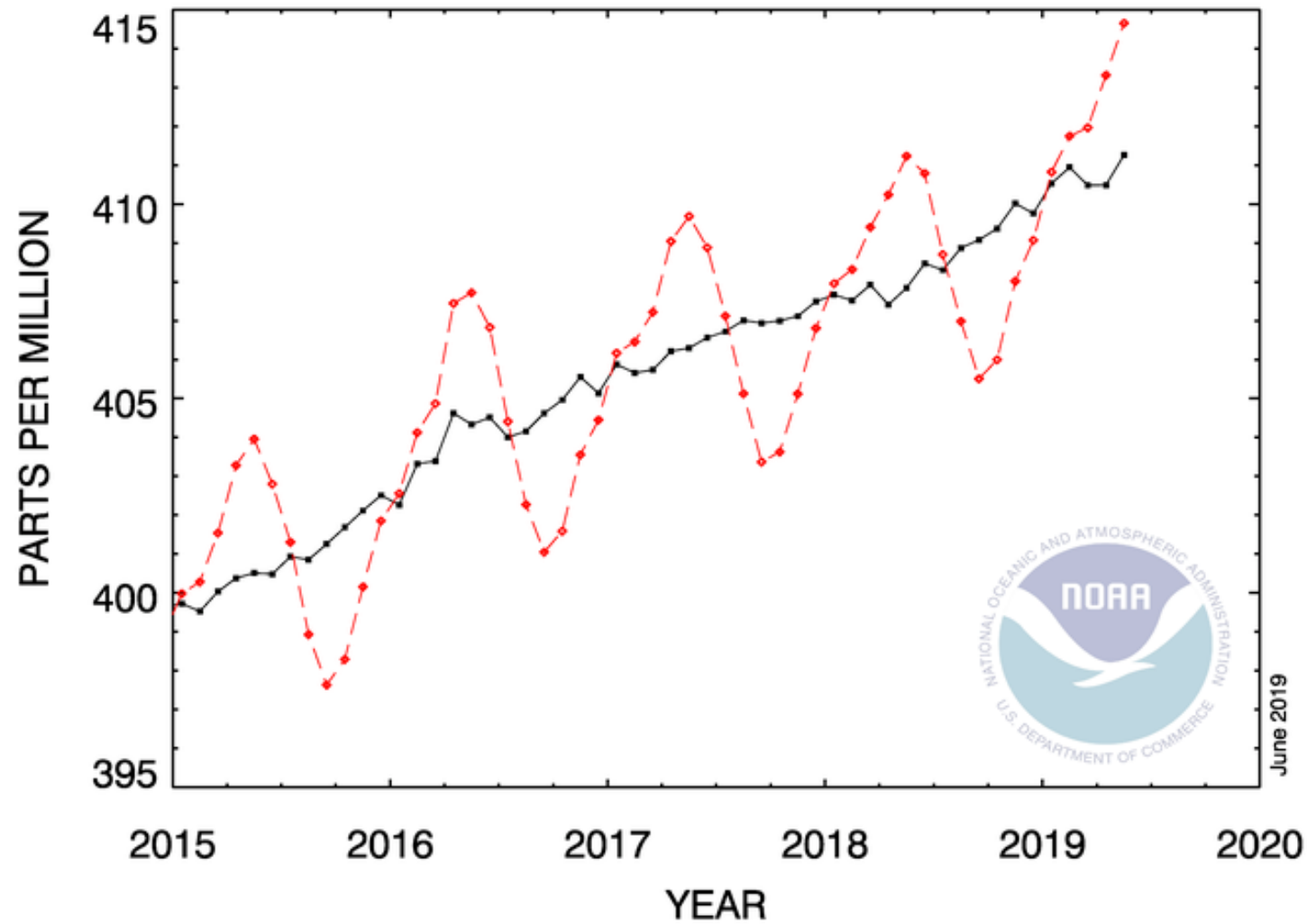


# CORONAVIRUS:

a rehearsal of a global  
emergency



## RECENT MONTHLY MEAN CO<sub>2</sub> AT MAUNA LOA



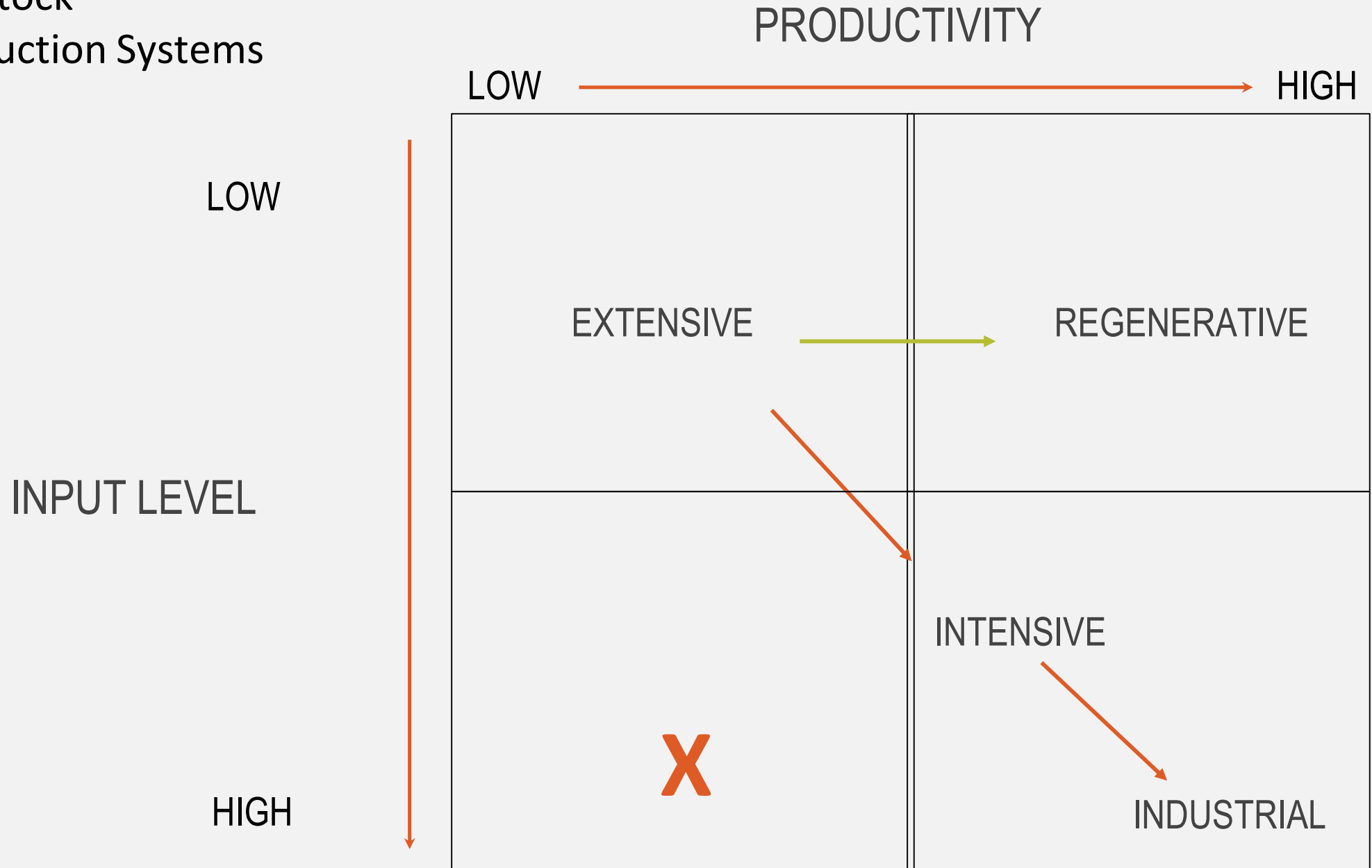
34 ppm to disruption point (+2 degrees)

**13,6** years at current rate



June 2019

Livestock  
Production Systems



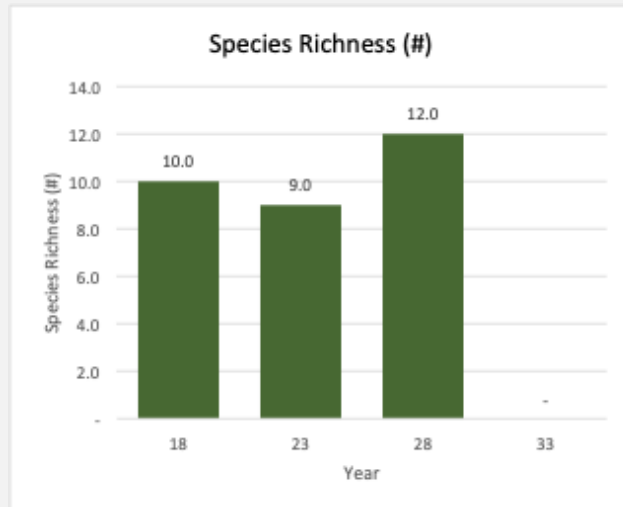
# Regeneration Principles

- From reductionist management to holistic management.
- Promote perennial species, native or exotic, with the greatest biodiversity (in a wide sense)
- Promote natural soil fertility through fungal, biologically active soils.
- Incorporate/keep trees in the landscape (silvopastoral systems)
- Maximize photosynthesis, with ample carbon pulses

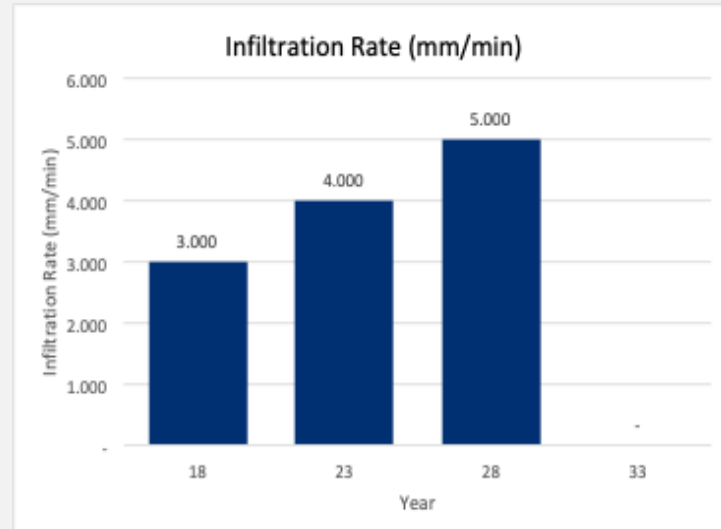
# Regeneration Indicators

- ✓ Increase/maintenance of soil cover (perennial vegetation)
- ✓ Increase in water infiltration and retention
- ✓ Increase in biodiversity (soil, vegetation and wildlife)
- ✓ Increase in photosynthesis (primary production)
- ✓ Increase in soil carbon

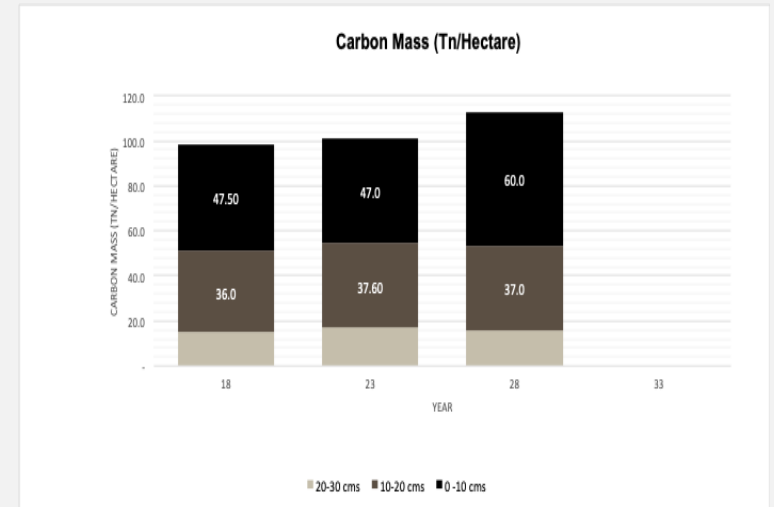
# Measuring Regeneration



**Biodiversity**



**Water**



**Soil Carbon**





N Río Negro, SN 005, 2014



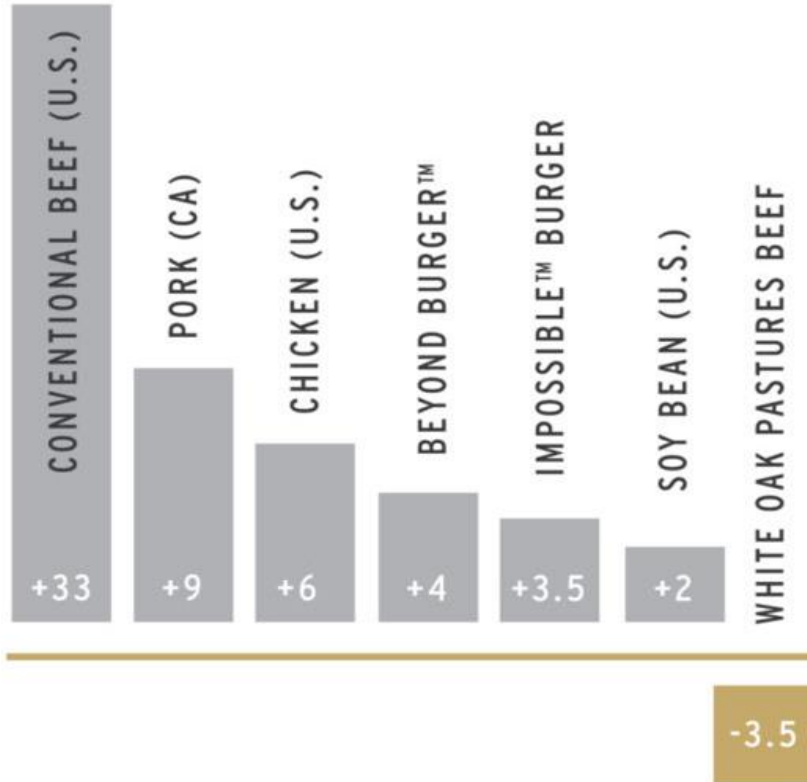




# NET TOTAL EMISSIONS

## WHITE OAK PASTURES VS OTHER PROTEINS

(PER POUND OF PRODUCT)



# WHITE OAK PASTURES BEEF SEQUESTERS MORE CARBON THAN IT EMITS

Emissions breakdown for every pound of White Oak Pasture's beef produced:

(POUNDS OF CO2 EQUIVALENT)





LAND to  
MARKET™

The world's first  
**verified regenerative sourcing solution**  
for meat, dairy, wool & leather.

[WATCH VIDEO](#)





ECOLOGICAL  
LAND TO  
MARKET  
**✓ VERIFIED™**  
2018  
OUTCOME

+

RESPONSIBLE WOOL STANDARD  
**R·W·S**  
CERTIFIED

The image shows two certification logos side-by-side, separated by a plus sign. The left logo is for 'Ecological Land to Market Verified 2018 Outcome', featuring a leaf icon and the text 'ECOLOGICAL LAND TO MARKET', '✓ VERIFIED™', '2018', and 'OUTCOME'. The right logo is for 'Responsible Wool Standard Certified', featuring a circular design with a sheep silhouette and the text 'RESPONSIBLE WOOL STANDARD', 'R·W·S', and 'CERTIFIED'.



LEATHER LEARNING SERIES PART TWO:  
**LEATHER'S CONNECTION TO THE  
FARM**

CHARTON JAHN LOCKS COO

ALIANÇA DA TERRA S/A

# INSIGHT INTO THE REALITIES OF PRODUCING CATTLE IN BRAZIL

## 2nd LARGEST HERD

216.1 MILLION HEAD



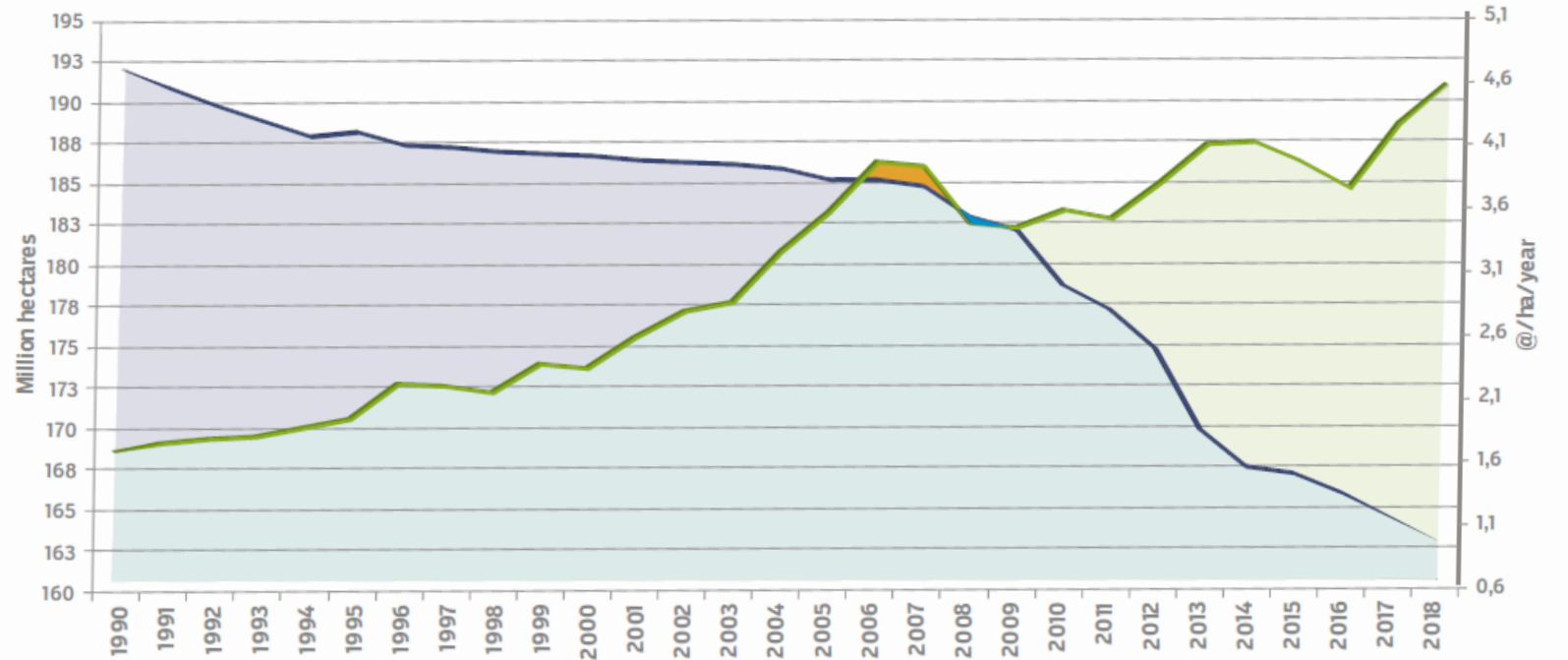
## 3rd BEEF PRODUCER

15,3% OF GLOBAL PRODUCTION



## 8,7% OF BRAZILIAN GDP

R\$ 597.22 bn



PASTURE LAND MILLION HA



PRODUCTIVITY @/HA/YEAR



INTERSECTION

Source: Athenago, Agroconsult data, Agrosatélite, IBGE, Inpe/Terraclass, Lapig, Prodes, Rally da Pecuária, Map Biomas





# SUSTAINABILITY

## Land use in Brazil

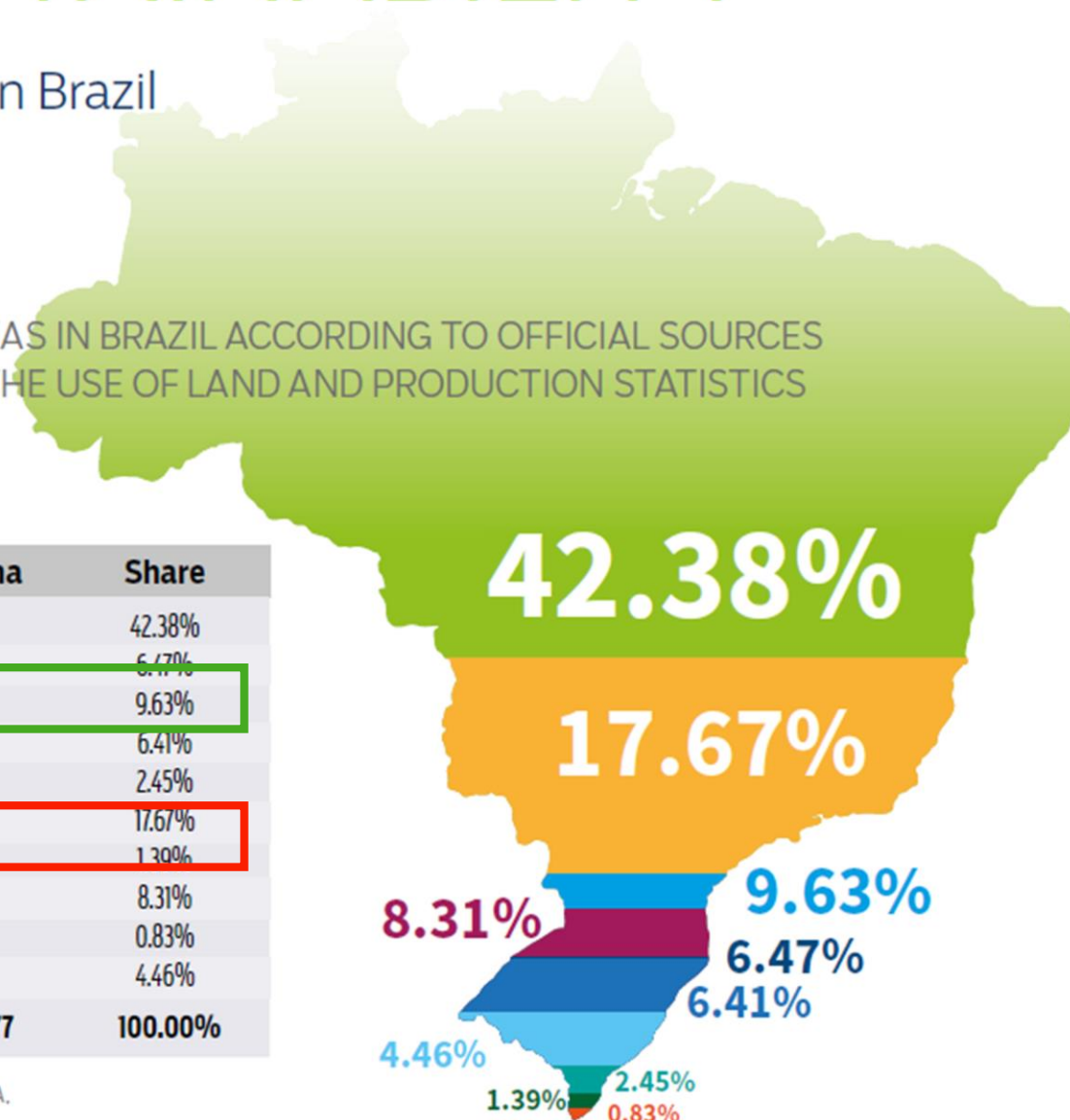
DISTRIBUTION OF AREAS IN BRAZIL ACCORDING TO OFFICIAL SOURCES OF MONITORING ON THE USE OF LAND AND PRODUCTION STATISTICS

MORE THAN 65%

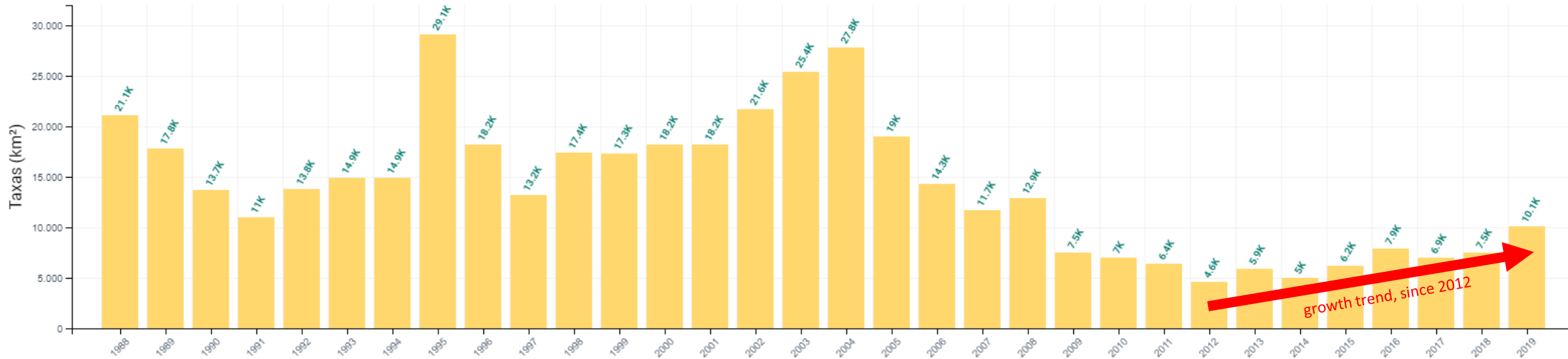
LESS THAN 20%

Types of occupancy	Million ha	Share
Native vegetation	360.9	42.38%
Permanent preservation area	55.1	6.47%
Native vegetation fit for agriculture outside the Amazon biome	82.0	9.63%
Legal reservation area	54.6	6.41%
Recovering area (since 2003)	20.9	2.45%
Exclusive pasture land	150.5	17.67%
Integrated use pasture land	11.8	1.39%
Perennial, semi-perennial and annual agriculture	70.8	8.31%
Reforestation	7.1	0.83%
Urban centers, water bodies, roads, mangrove and other uses	38.0	4.46%
<b>Total area in the country</b>	<b>851.577</b>	<b>100.00%</b>

Source: Athenago, Agroconsult data, Agrosatélite, IBGE, Terraclas/Inpe, MAPA, Map Biomas, Lapig, Embrapa, Rally da Pecuária



## LEGAL AMAZON DEFORESTATION



Source: INPE, 2020

**IF 100% OF ALL THE DEFORESTATION AREA REGISTERED BETWEEN 2012 AND 2019  
BECOME PASTURE (WHICH IS NOT), IT REPRESENTS AN INCREASE OF 3.32% OF  
PASTURELAND IN BRAZIL**

**WOULD IT BE CORRECT TO PENALIZE THE REST OF THE SECTOR (96.64%) BECAUSE  
OF THIS?**

# WHAT ARE THE GREATEST CHALLENGES PRODUCERS FACE?

REPUTATIONAL  
PROBLEMS



MARKET  
CONCENTRATION



BRAZILIAN  
COST



LAND INVASION



LACK OF GOVERNANCE



LACK OF INFRASTRUCTURE



FIRES



WHAT IS THE LIFE OF A PRODUCER? WHAT ARE THE RANGE OF ACTIVITIES THEY DO WITHIN A DAY, A YEAR?





## WHAT ARE THE UNIQUE ASPECTS OF FARMING IN BRAZIL?



## CASE

# SPANISH BREEDS



## DESCRIPTION

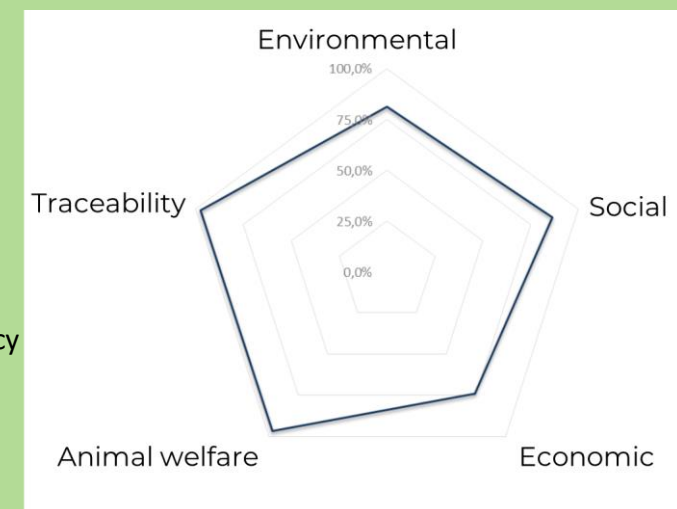
- 43 ranches verified
- 552k hectares under sustainable management
- 198k hectares preserved
- 167k cows (~80k heads slaughter/year)
- Genetic control
- 25,7 millions tons of forest carbon stock

## SOME RESULTS

- 0 (zero) fires in 2019
- 0 (zero) deforestation in 2019
- 1.197 people working in safety and health conditions

## NECESSITIES

- Technical assistance
- US\$ 2,8 million to full adequacy





# Produzindo Certo

MAIS VALOR PARA O  
AGRONEGÓCIO RESPONSÁVEL



YOUNG COMPANY,  
BUT WITH HUGE HISTORY AND RESULTS



Produzindo Certo has in its DNA the trajectory of the NGO Aliança da Terra, created in 2004. In all these years, we have developed, hand in hand with the farmer and the rancher, an exclusive methodology that identifies the actions necessary for rural properties to produce in balance with people and the environment.



PRODUZINDO CERTO TRANSFORMS AGRIBUSINESS CHAINS, BRINGING  
TOGETHER PRODUCERS AND COMPANIES COMMITTED TO THE  
CORRECT MANAGEMENT OF NATURAL RESOURCES AND RESPECT FOR  
SOCIETY



PRESENT IN MAIN PRODUCING REGIONS  
BRAZIL AND LATIN AMERICA

TOTAL  
5.838.605 ha  
1.310 properties

MÉXICO  
348.859 ha  
25 properties

14.523 ha  
1 property

COLOMBIA

RR  
3.772 ha  
2 properties

PA  
480.465 ha  
43 properties

MA  
51.155 ha  
3 properties

PI  
29.453 ha  
1 properties

RO  
14.561 ha  
31 properties

MT  
3.548.484 ha  
596 properties

TO  
77.386 ha  
23 properties

BA  
309.521 ha  
48 properties

DF  
2.615 ha  
8 properties

GO  
263.275 ha  
150 properties

MG  
159.201 ha  
80 properties

MS  
334.474 ha  
108 properties

SP  
54.291 ha  
18 properties

PR  
20.539 ha  
22 properties

RS  
1.238 ha  
123 properties

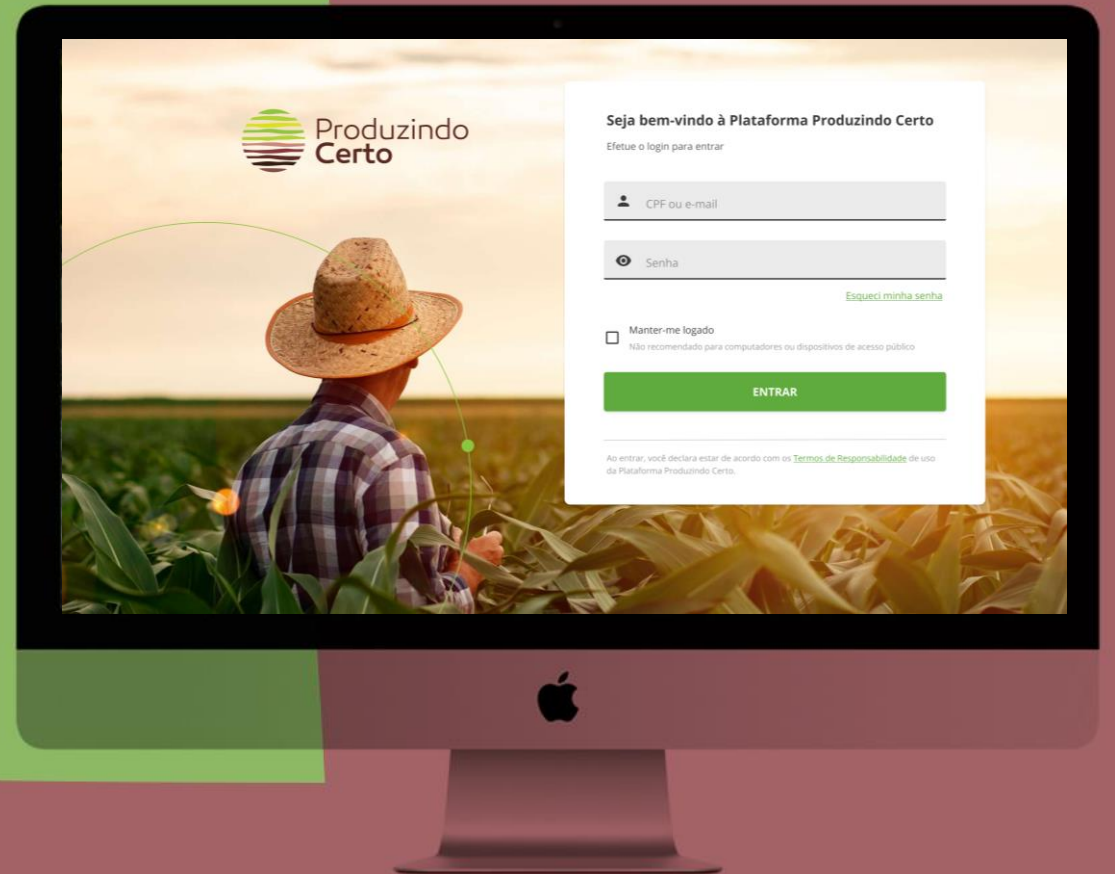
124.012 ha  
27 properties

PARAGUAI

124.012 ha  
27 properties

## TRANSPARENCY 24 HOURS, ANYWHERE

All the information about your project can be followed online through a customized dashboard, accessed on your computer or smartphone from anywhere in the world.





The Produzindo Certo team is made up of specialists in several areas, but all with a focus on seeking a balance between production and management of natural and human resources.

They are agronomists, forestry and environmental engineers, veterinarians and zootechnicians. They form multidisciplinary teams to analyze and propose actions to farmers and ranchers.

The group gains reinforcements from specialized professionals according to the demand for projects that require more professionals and new qualifications.

Idealizador  
John Carter

Leadership  
Aline Locks - CEO  
Charton Locks - COO  
Jack Turner - CFO

Technical team  
Cristhiane Simioli  
Maria Zelma Gomes  
Monaliza Muhl  
Fábio Almeida  
Willian Campos  
Jaime Dias  
Jaila Raiane de Souza  
Luiza Turcatoo

Comercial  
Diego Pedr'Angelo

Administrative  
Ciena Sousa

Financial  
Jaline Mendes

Technology  
Marcos Vinícius



# Leather's Connection to the Farm

## Experience of ACDI with Livestock producers

Mariano Salerno and Máximo Marani

ACDI

¿Who we are? ¿What we do?

Previous Experience with livestock producer

- PROGAN
- Grassland management

“The future is in the forest” Gran Chaco

- Ecosystem Business model
- Transversal solution

# ACDI

**ONG founded in 90's**

**Core Mission: Development of people**

**Design and execution of projects**

**Scope**

- **Environment**
- **Education**
- **Employment**

# PROGAN

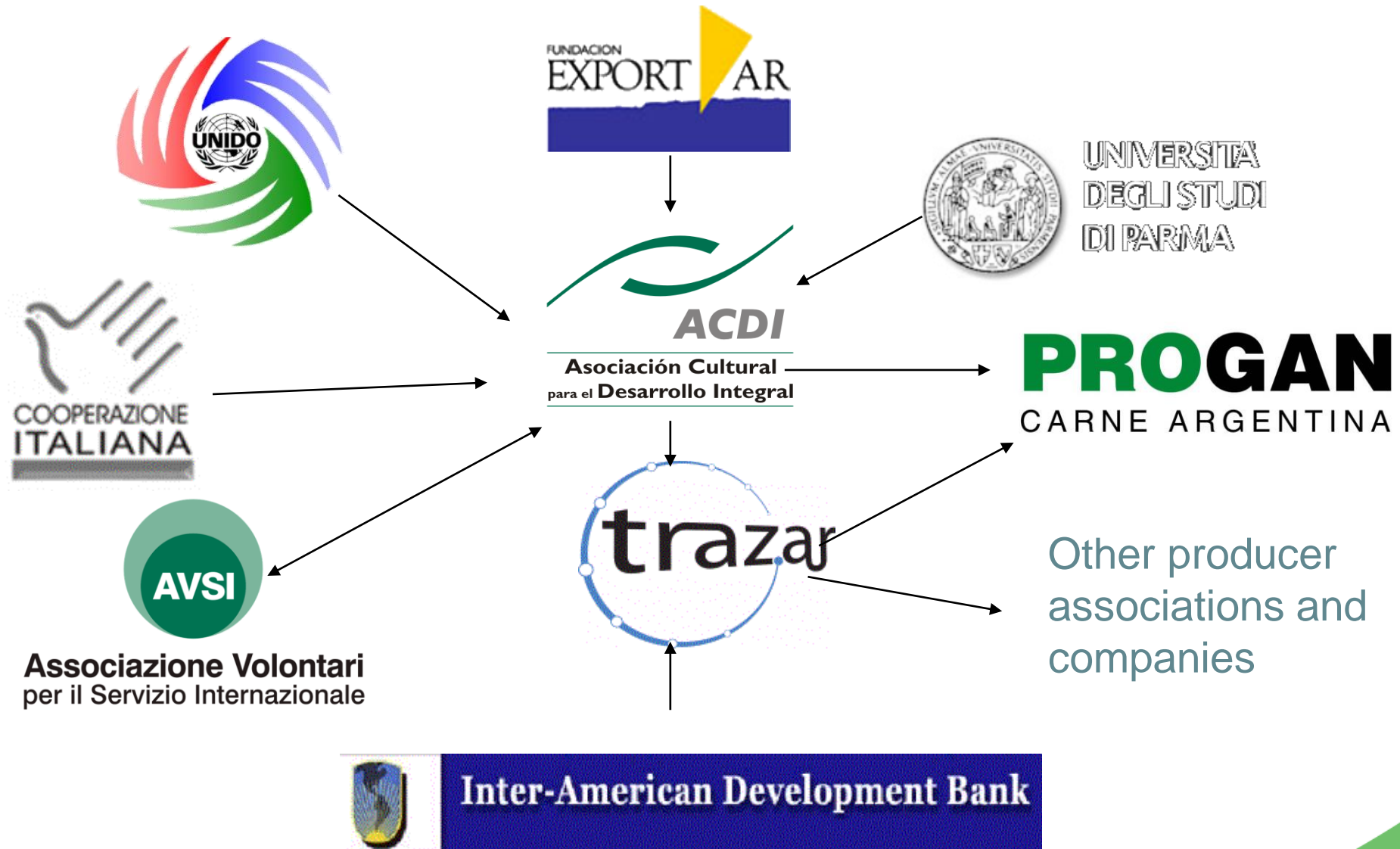
- Add value
- Quality Standardization
- Traceability
- Association to export directly
- Alliances with slaughter importers
- Access to credit



**PROGAN**  
CARNE ARGENTINA

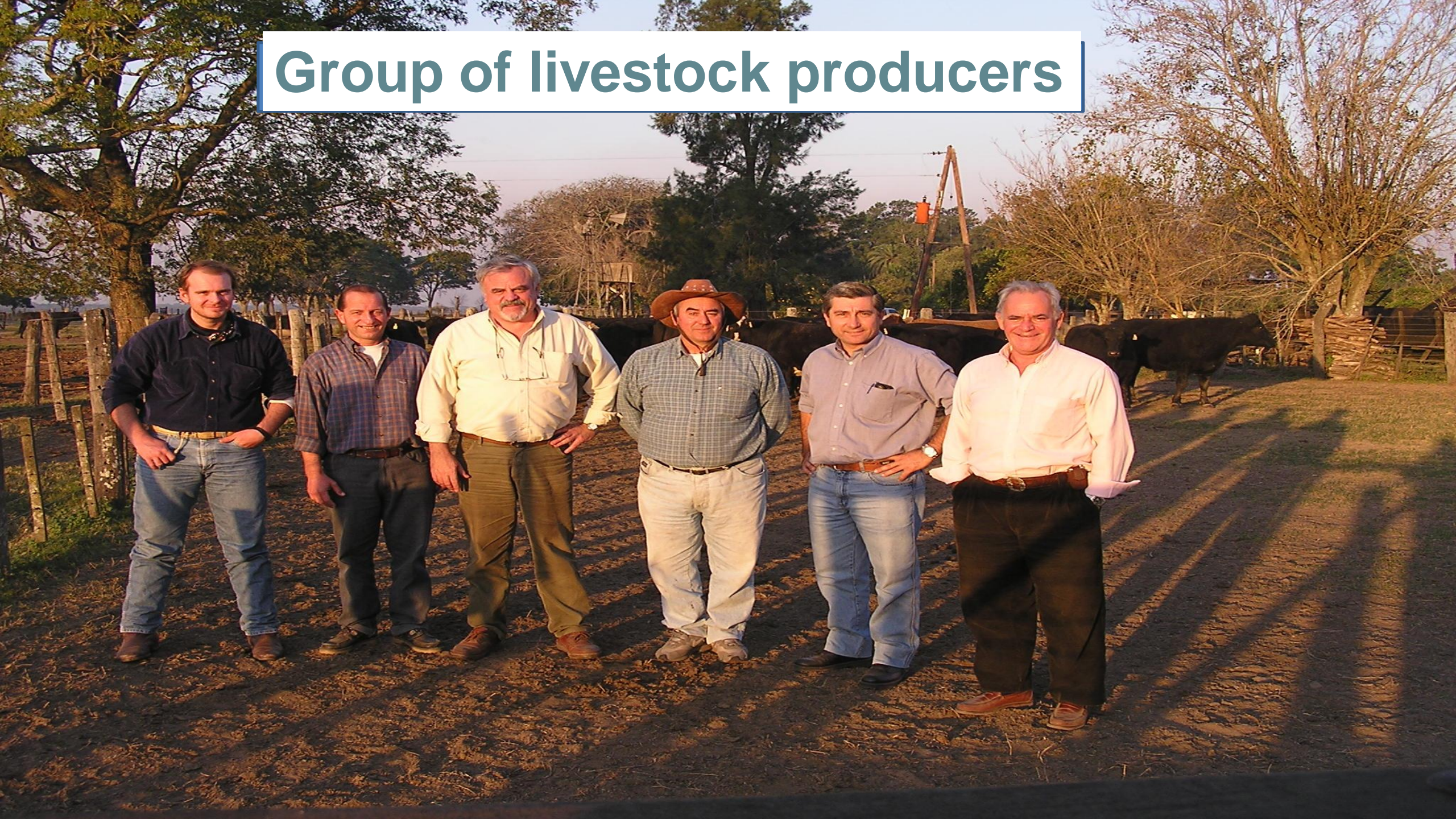


# Partners





# Group of livestock producers





# “Grassland management for livestock production”



AVES ARGENTINAS  
Asociación Ornitológica del Plata



FUNDACIÓN  
VIDA SILVESTRE  
ARGENTINA

## GANADERÍA SUSTENTABLE de pastizal



Hacia una producción ganadera de calidad basada en un uso sustentable de los pastizales naturales y su biodiversidad

Apoyan



Financia



Participa de la iniciativa



Alianza del  
PASTIZAL  
Para conservar la biodiversidad

# Grassland livestock benefits



**Based on native ecosystem**

**Wildlife conservation (birds)**

**Each farm is a natural reserve of biodiversity**

**Standard developed**



# Gran Chaco Challenges

- 3rd largest forest in Latin America
- Largest dry forest in the world
- Cultural diversity presence of 40 indigenous and traditional communities
- 8% of total population is indigenous: Wichí, Chané, Qom, Iyojwa'ja (Chorote), Tapu'i (Tapieté)
- Deforestation and forest degradation
- Climate change emergency and lack of water access threaten the survival of these ecosystems and increase poverty, and
- Vulnerable population



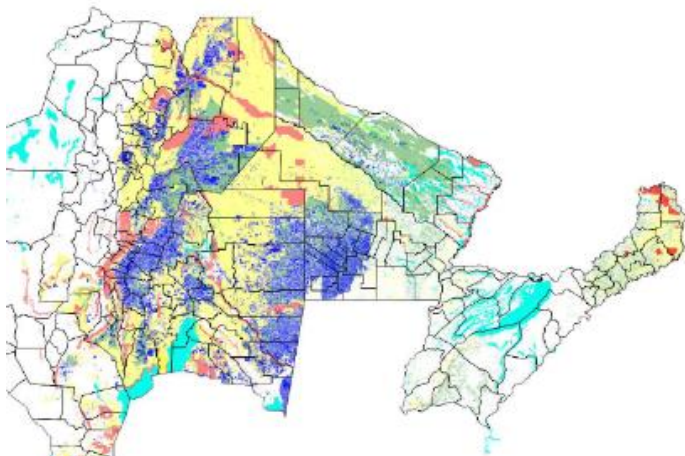
Source: WWF Living Forest Report Chapter 5

Deforestation fronts (WWF 2015)

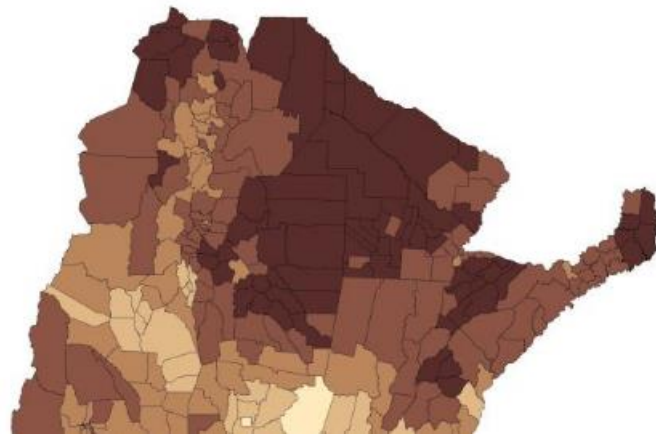
# Gran Chaco Challenges for livestock producers

- Native forest is the main natural capital
- Lack of water supply
- Isolated communities
- Poverty
- Production of 270 thousand kilos of meat yearly
- Indigenous communities are dedicated to family farming, harvesting, fishing and hunting using all available resources from native forests

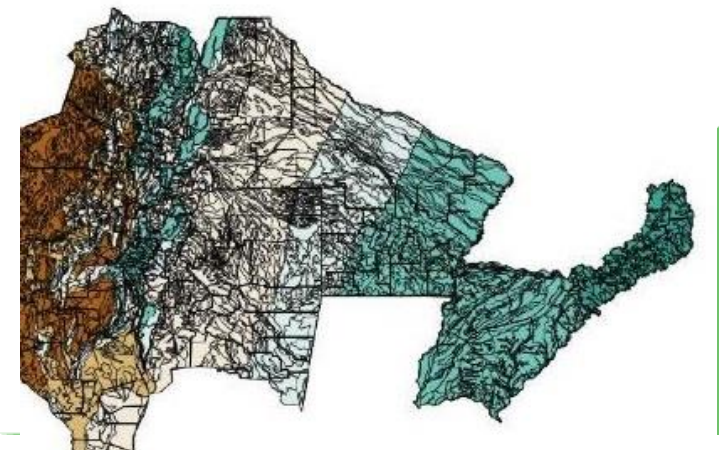
Forests



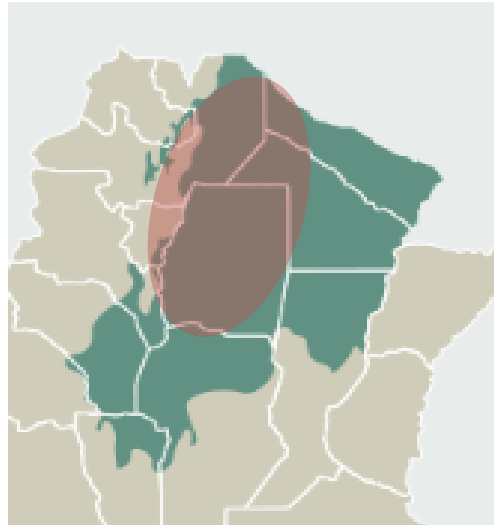
Poverty



Aridity



# THE FUTURE IS IN THE FOREST



is a movement that promotes business models to stimulate competitive and sustainable development by enhancing the value of natural and cultural capital, combining innovation with traditional knowledge. 4600 people involved in *The future is in the forest*.





# Solution



## Business based on ecosystems

## Business based on ecosystems

Livestock  
FARM



Forest -  
Wood



Non-Wood  
and  
Beekeeping



Agroforestry



Cultural  
Identity



Water



Connectivity



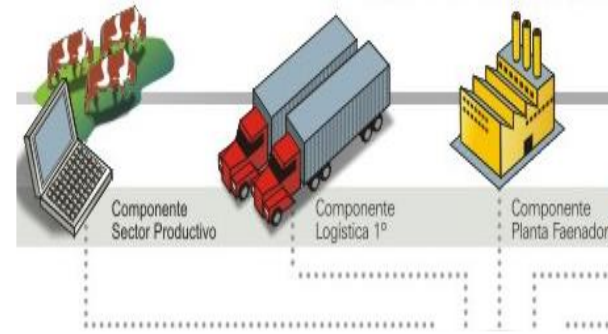
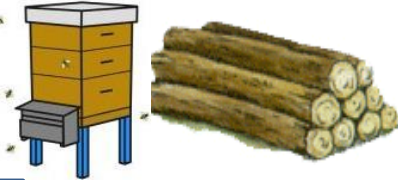
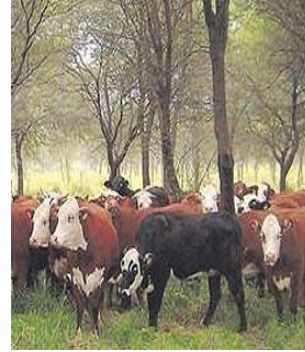
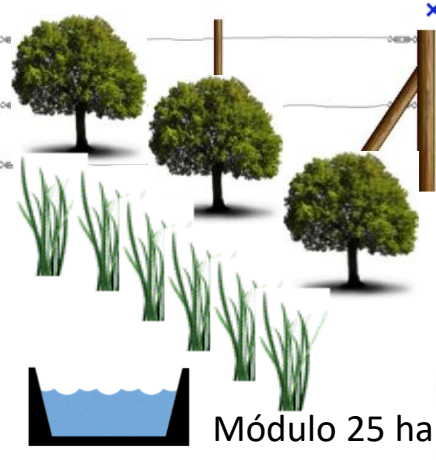
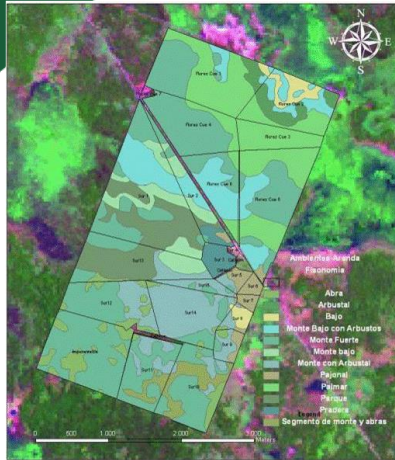
Credit





# Sustainable Production Development

**THE FUTURE IS  
IN THE FOREST**



Módulo 25 ha

## Planning

## Infraestructure

## Production

## Management and organization

Land and property planning.

Fences, electric fences, reforestation with native species, pasture, water

Livestock, beekeeping, forest production, carob

ICTs for management, associative marketing, integration of the value chain, valorization of local production



# Integration of forest and livestock management





# Training





# Infrastructure





# Biodiversity





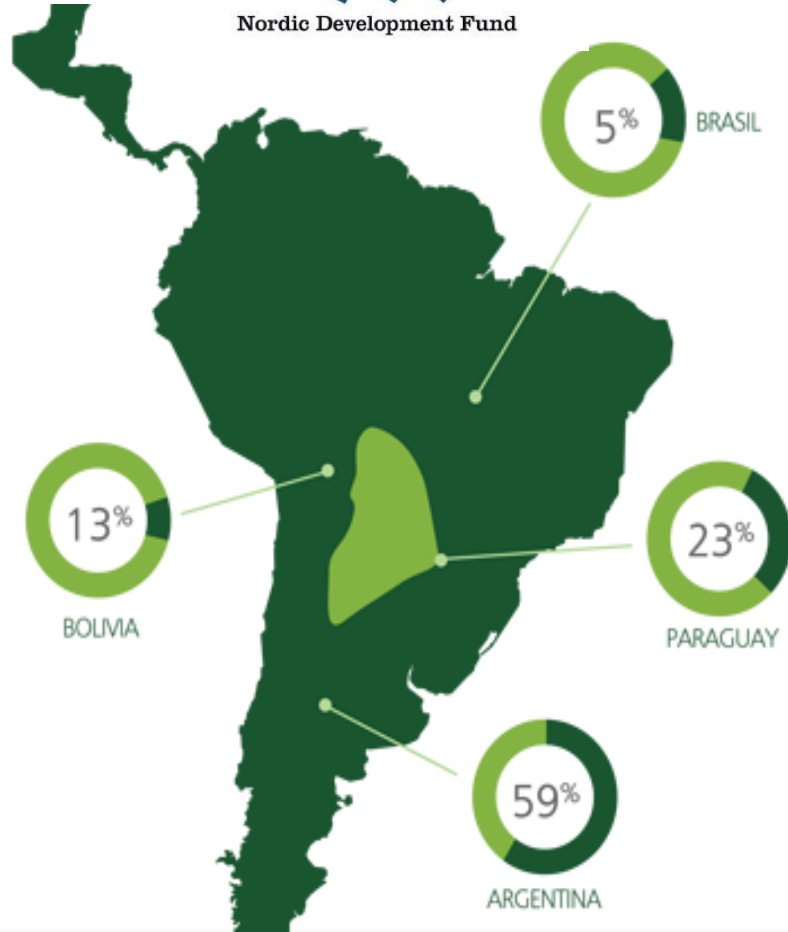


Gran Chaco Nanum Village is a partnership with Samsung Argentina. 20 technology centers were built to provide internet connectivity for local indigenous communities. This promotes economic and productive development





**Gran Chaco Proadapt**  
Construyendo Resiliencia Climática



## Generation of a trinational alliance

OSC, private sector, Local and national governments, the Science and Technology system, development investment to contribute to the adaptive capacity and greater resilience of the Gran Chaco against impacts derived from climate change and climate variability

# Access to water



**THE FUTURE IS  
IN THE FOREST**

**Changes that matter**



# Thanks



## Mariano Salerno

☎ +54 342 4566049    Móvil: +549 11 65838107

🏠 Rivadavia 2681, Santa Fe

🌐 [www.acdi.org.ar](http://www.acdi.org.ar)

📱 @ACDIargentina





TEXTILE EXCHANGE  
June 23, 2020

---

Kaley Segboer,  
Certification Framework Manager





## MISSION



Advance continuous improvement of Canadian beef industry sustainability through multi-stakeholder engagement, collaboration, communication and science.







Lakeland COLLEGE

LEADING. LEARNING. SINCE 1913.



CACTUS CLUB CAFE



Les Producteurs de bovins du Québec



MOXIE'S GRILL & BAR



Conseil de l'orge du Canada



Barley Council of Canada

IdentiGEN



Conseil de l'orge du Canada



Barley Council of Canada



RBC Royal Bank



Conserving Alberta's Wild Side



Ducks Unlimited Canada



National Voice Of Cattle Producers



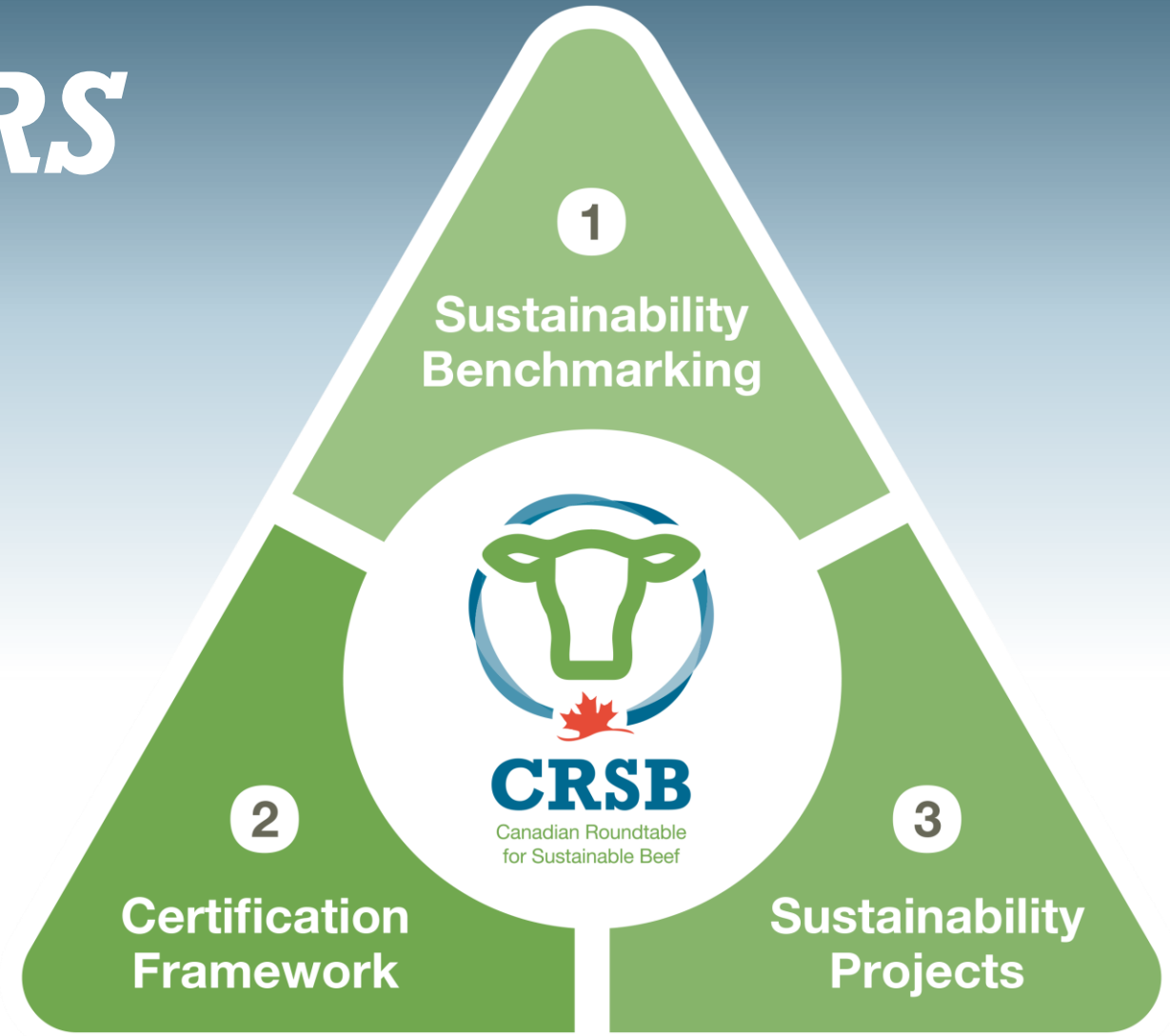


# THREE PILLARS OF WORK



## Mission

Advance continuous improvement of Canadian beef industry sustainability through multi-stakeholder engagement, collaboration, communication and science.



# Definition of SUSTAINABLE BEEF:

a socially responsible, environmentally sound and economically viable product that prioritizes the **Planet, People, Animals & Progress**

## PRINCIPLES



NATURAL  
RESOURCES



PEOPLE & THE  
COMMUNITY



ANIMAL HEALTH  
& WELFARE



FOOD



EFFICIENCY &  
INNOVATION



ECONOMIC VIABILITY

# Key Components of the Framework



## 1. The Standards:

- Sustainable Beef Production Standard
- Sustainable Beef Processing Standard

## 2. Assurance Protocols

- Guidance and requirements for the certification process

## 3. Chain of Custody Requirements

- Technical and administrative requirements for tracking cattle, beef and claims about beef sourced from Certified Operations through the supply chain

## 4. Sustainability Claims

- Guidance on how to communicate about the Framework, sustainable sourcing and CRSB's initiatives





# Two Standards

1. Sustainable Beef Production Standard
  - Cow-calf, backgrounding, feedlot, dairy beef
2. Sustainable Beef Processing Standard
  - Primary processors



# CERTIFICATION PROCESS



## Indicator Assessment

Entry Threshold (Score: 0)	Achievement (Score: 1)	Innovation (Score: 2)	Excellence (Score: 3)
-------------------------------	---------------------------	--------------------------	--------------------------

**Entry Threshold:** needs improvement prior to successful certification

**Achievement:** required for certification on all indicators

**Innovation and Excellence:** not required for certification, used to help advance and recognize continuous improvement





# Natural Resources

NR1: Riparian areas, wetlands, surface and ground water sources and nutrient runoff are responsibly managed to help maintain or enhance watershed health.







**NR2: Soil health is maintained or enhanced.**

[https://www.facebook.com/narcoslicattleco/?\\_\\_tn\\_\\_=%2CdK\\*F-R&eid=ARA3ot\\_OGM8zk7b78oCPH726gaiWX8vq833wsYNS0tEA29RSzMKVpnaedLnYbabi-AnkZKmmaOemapEW](https://www.facebook.com/narcoslicattleco/?__tn__=%2CdK*F-R&eid=ARA3ot_OGM8zk7b78oCPH726gaiWX8vq833wsYNS0tEA29RSzMKVpnaedLnYbabi-AnkZKmmaOemapEW)



## Beef cattle production

helps preserve approximately  
**1.5 BILLION**  
tonnes of carbon in Canada.

The estimated value of this  
storage is \$82.5 billion.<sup>1</sup>



NR 3: Practices that support carbon sequestration and minimize emissions are understood and/or employed.

<sup>1</sup>If regulatory frameworks in Canada were to put a price on carbon. Estimate based on conversion of carbon to CO<sub>2</sub> eq. at \$15/tonne (low range from AB, BC).

Find the facts at  
[www.crsb.ca](http://www.crsb.ca)








**NR4: Air quality for people and animals is responsibly managed.** This requirement is applicable to feedlots only.







NR5: Grasslands, tame pastures and native ecosystems are maintained or enhanced .







# GRAZING CATTLE IS **CRITICAL** TO GRASSLAND BIRD SURVIVAL

Grassland bird populations have declined by 87% since 1970; much of their remaining habitat is managed by beef producers.

**87%**  
▼



**SAVE THE BIRDS;  
EAT BEEF!**



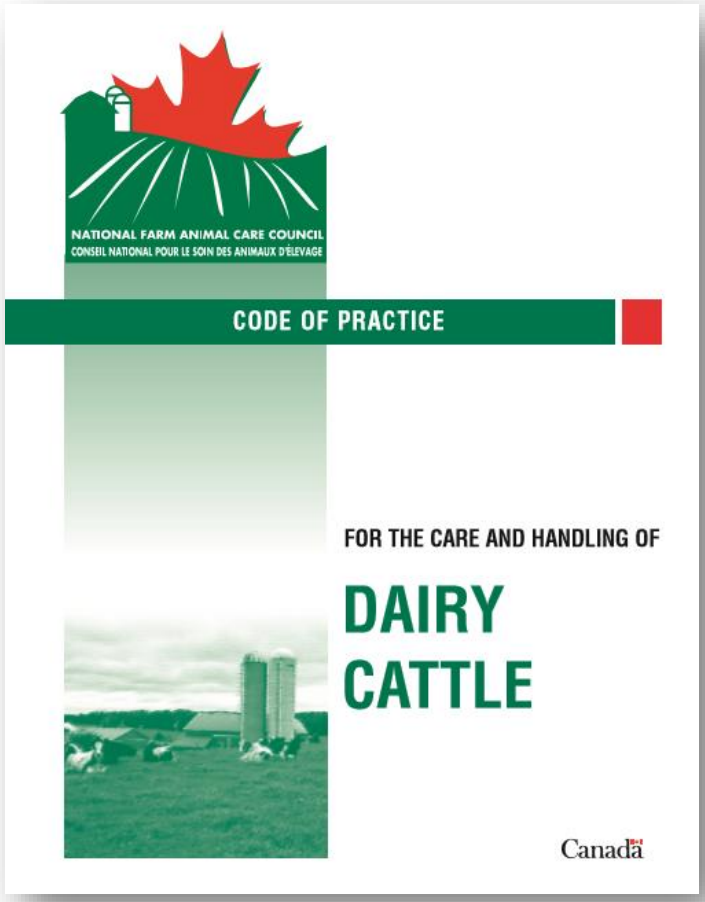
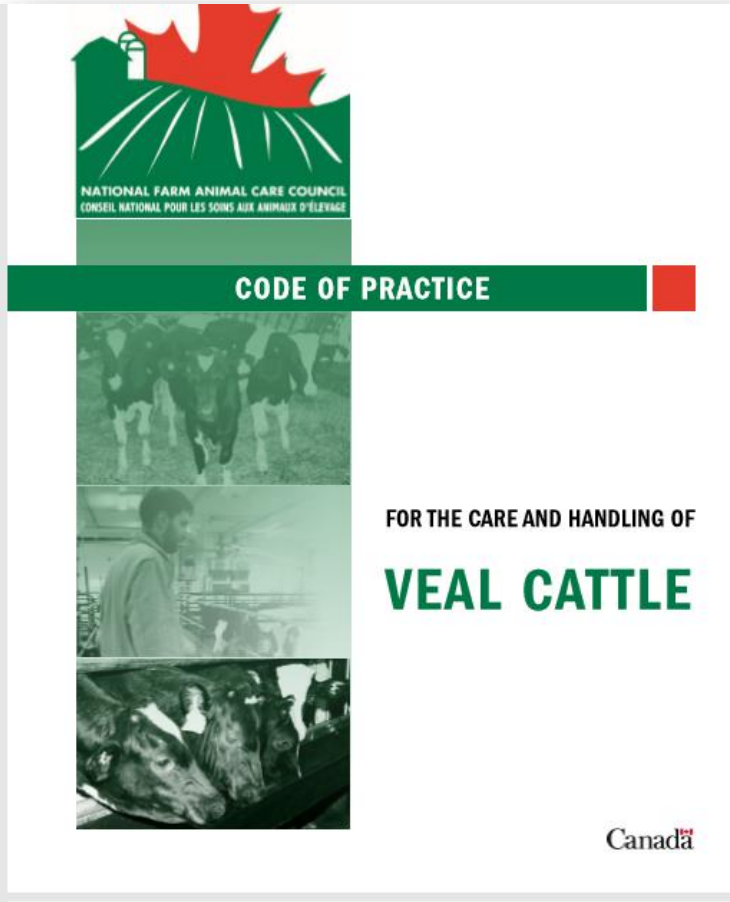
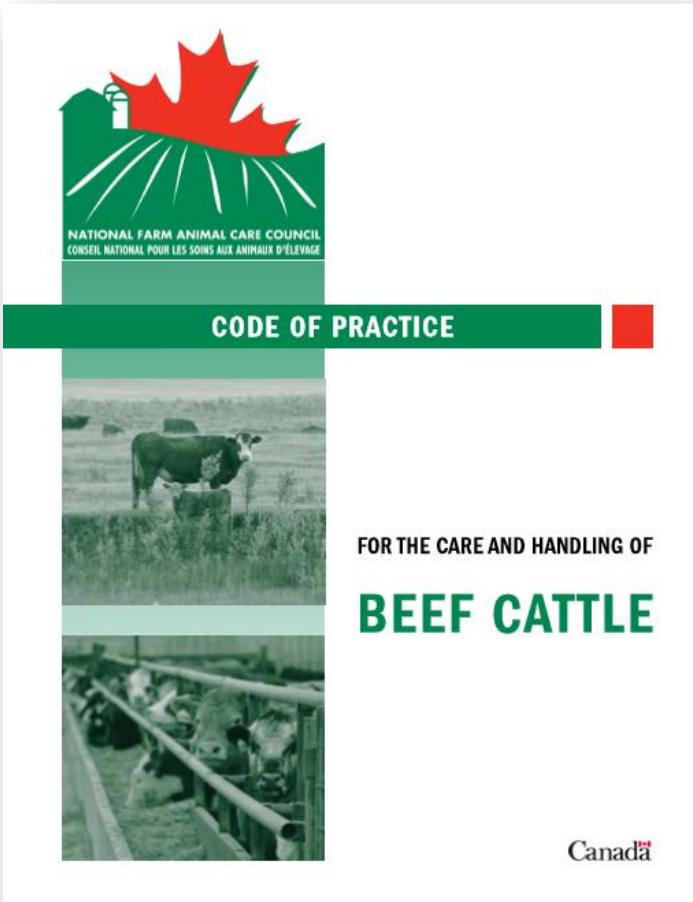
[http://nabci.net/wp-content/uploads/39-004-Canada-State-of-Birds\\_EN\\_WEB-1.pdf](http://nabci.net/wp-content/uploads/39-004-Canada-State-of-Birds_EN_WEB-1.pdf)

Find the facts at [www.crsb.ca](http://www.crsb.ca)

NR6: Habitat for wildlife is maintained or enhanced, and wildlife conflict prevention is managed.



# Animal Health and Welfare







AHW 1: Cattle are regularly monitored and have sufficient quantity and quality of water and feed, when required, to meet their physical needs.





AHW2: Cattle have sufficient quantity and quality of water.







AHW 3: Cattle shall be monitored on an ongoing basis to ensure prompt and appropriate treatment or care.





AHW 4: Animal health products are responsibly used and disposed.

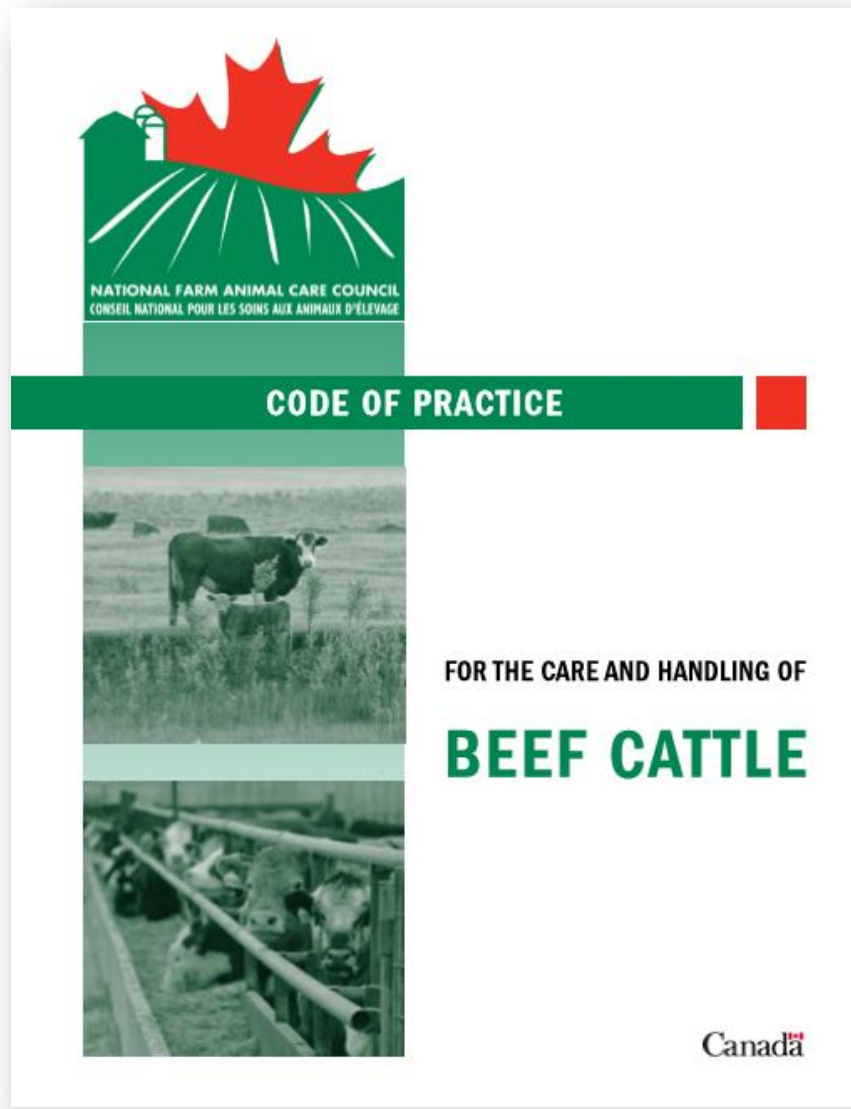






AH5: Steps are taken to mitigate/minimize animal pain and distress.





AHW 6: Decision points for euthanasia are clear and methods of euthanasia are acceptable.





AHW 7: Feeding areas and pastures allow cattle to express normal behaviors including resting postures.



AHW 8:  
Unnecessary  
animal stress is  
minimized.







# Thank you

[crsb.ca](http://crsb.ca)

[crsbcertified.ca](http://crsbcertified.ca)



[info@crsb.ca](mailto:info@crsb.ca)



# Thank you!

---



---

[TextileExchange.org](https://TextileExchange.org)

## © Copyright Notice

This presentation is protected by U.S. and International copyright laws.

Textile Exchange welcomes you to use slides from this collection for your presentations on the condition that:

- The slides are not altered from the way it is presented in its original format, this includes changing colors and style.
  - The Textile Exchange logo should not be removed.
  - Adding logos and/or content is not permitted without written permission from Textile Exchange.
- Any presentation using this content or any form of this content should acknowledge Textile Exchange as the author.