



**Textile
Exchange**

Introduction to Membership

Founded in 2002, Textile Exchange is a global non-profit 501(c)3 with more than 700 members representing leading brands, retailers, and suppliers in the textile industry. The organization works to create leaders in the responsible fiber and materials sector by providing learning opportunities, tools, insight, standards, data, measurement, and benchmarking; and by building a community that can collectively accomplish what no individual or company can do alone.

Vision

We envision an enriching global textile industry that protects people and planet by positively impacting climate, soil health, water, and biodiversity.

Mission

Textile Exchange inspires and equips people to accelerate the adoption of preferred materials through clear and actionable guidance. We convene the textile industry to collectively achieve climate reduction goals and holistic positive impacts across fiber and raw material production.

“With buy-ins from Industry leaders like H&M, Inditex, Nike, and Lenzing, Textile Exchange’s membership reads like a who’s who of the Garment and Textile Industry.” - *Sourcing Journal*

Climate⁺

For years, Textile Exchange has promoted practices, standards, and resources that benefit the climate.

Under the Climate+ strategic direction, Textile Exchange will be the driving force for urgent climate action with a goal of **45% reduced CO2 emissions from textile fiber and material production by 2030.**

The **+** in Climate+ represents the interconnected pillars that constitute Climate; water, biodiversity, and soil health.

The **+** also represents partnership - the collaborative mentality needed to accomplish this goal.

Achieving the 2030 Strategy: The Climate+ goal will require strong partnerships to accelerate the adoption of existing tools as well as enable disruptive innovation around new business models and zero-carbon materials.

Learn more at: TextileExchange.org/2030-climate-plus



The Value of Membership

Join more than 700 like-minded members in delivering the Climate+ goals.

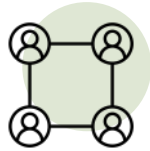
Textile Exchange empowers its Members to navigate the complexities of the textile industry. Regardless of where you are in your sustainability journey, Textile Exchange Membership will equip you with data, tools, and, most importantly, the community necessary to achieve the 45% GHG reduction goal.

As a global non-profit, our suite of resources focuses on minimizing the harmful impacts of the textile industry and maximizing its positive effects. Since 2002, we have helped establish best practices and fair business models for the entire supply network from farm to retail.

United by our Climate+ Strategy, our members connect, collaborate, and accelerate the rapid adoption of preferred materials for the textile industry.

All that is missing to reach this goal is your voice
- join us today





Unlock the Power of Community

Connect. Collaborate. Accelerate Join a community that can collectively accomplish what no individual or company can do alone. Gain access to our Membership Community Portal – The Hub.



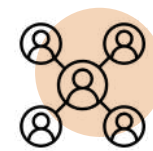
Access to Expertise

Dedicated support from Textile Exchange's staff (865 years of combined experience) via The Hub. Individual team access and virtual training for our Partner-Level members. Access to our member-only Fiber & Materials resources.



Show Leadership & Gain Exposure

Be featured in Textile Exchange's member-focused communications, including exposure on our website, social media, member-only reports, and member spotlights*. *Member spotlights reserved for Partner-Level members.



Convene & Connect

Expand your organization's network through our member-only online community portal The Hub, exclusive members-only events, webinars, and publications. Benefits include tickets (or a discounted price tickets) to our annual conference, depending on the level of membership.



Develop, Measure & Track Progress to a Preferred Fiber Strategy

Demonstrate progress and industry leadership towards achieving the Climate+ goals. All members participating in the Corporate Fiber and Materials Benchmark have access to advanced report cards.



Partner - \$12,500 USD / year

We welcome brands, retailers, suppliers, and manufacturers generating over \$25 million USD in annual sales.

Value of Member Benefits >\$15,000 USD

- Annual Conference Tickets - 3 In-Person, 2 Virtual (Value \$8,200 USD) + 25% discount on additional tickets
- Access to our range of 49 Material Summary publications (Value \$2,450 USD) • Corporate Fiber and Materials Benchmark (CFMB) Advanced Scorecard (Value \$3,000 USD)
- Member-only training on Preferred Fibers or Standards (Value \$1,500 USD)
- Additional benefit for Supplier Partners only: Exhibit space at the annual Textile Sustainability Conference (Value \$3,000 USD)



Supporter - \$3,000 USD / year

We welcome brands, retailers, suppliers, and manufacturers generating between \$5 and \$25 million USD in annual sales.

Value of Member Benefits >\$9,600 USD

- Annual Conference Tickets - 1 in-person/2 virtual (Value \$4,200 USD) + 25% discount on additional tickets.
- Access to our range of 49 Material Summary publications (Value \$2,450 USD)
- Corporate Fiber and Materials Benchmark (CFMB) Advanced Scorecard (Value \$3,000 USD)



Friend - \$500 USD / year

Reserved for small to medium-sized enterprises that generate under \$5 million USD in annual revenue. Contact Membership@TextileExchange.org for approval.

Value of Member Benefits >\$3,500 USD

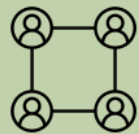
- Annual Conference Tickets - 25% discount, (Value \$500 USD)
- Corporate Fiber and Materials Benchmark (CFMB) Advanced Scorecard (Value \$3,000 USD)

Open-source access to the following programs and publications, funded by Membership fees:



Benchmarking:

Members are entitled to an advanced scorecard, including gap analysis and impact dashboard.



Round Tables:

Join fiber-specific monthly video calls and access the respective communities via The Hub



Learning Center:

Download reports, and stream public-facing webinars.

		Partner	Supporter	Friend
Unlock the Power of Community	Annual dues renew on a rolling and permission basis	\$12,500	\$3,000	\$500
	Unlimited Access to the Member Portal The Hub	No limit to the number of subscribers from your organization.	No limit to the number of subscribers from your organization.	No limit to the number of subscribers from your organization.
	Annual Conference Tickets	3 In-Person, 2 Virtual (value: \$8,200) + 25% discount on additional tickets.	1 In-person/2 Virtual (value: \$4,200) + 25% discount on additional tickets.	25% discount (value: \$500)
	Annual Conference Member-Only Event	No limit to the number of attendees from your organization.	No limit to the number of attendees from your organization.	No limit to the number of attendees from your organization.
	Invitations to Regional Events	✓	✓	✓
	Exhibit Space at our annual conference**	Value: \$3,000 (for Suppliers)	—	—
Education and Leveling Up	Job listings on The Hub and Textile Exchange's Job Zone	✓	✓	✓
	Annual Conference Recordings	✓	✓	✓
	Materials Summaries Library (49 Publications)	Value: \$2,450	Value: \$2,450	Available for purchase
	Member-only webinars - Report Briefs	✓	✓	✓
	Member-only training on Preferred Fibers or Standards	Value: \$1,500	—	—
	Unlock over 900 years of Sustainability Experience - one on one calls with our TEam	✓	Served via the Member Portal	Served via the Member Portal
Recognition	Corporate Fiber and Materials Benchmark Advanced Scorecard	Suppliers: > \$18,000*	Value: \$3,000	Value: \$3,000
	Logo on our website with links	✓	✓	✓
	Certificate of Membership, Member logo for marketing	✓	✓	✓
	Priority for inclusion in the Conference Agenda	✓	✓	✓
	Insider Series - for relevant submissions	—	✓	✓
	Member Spotlight - Inclusion in newsletter, featured on our website	✓	—	—
Total Value		Brand/Retailers > \$15,000	Suppliers > \$18,000*	> \$9,600

* Suppliers and manufacturers receive exhibit space at our annual conference





**Textile
Exchange**

Thank you